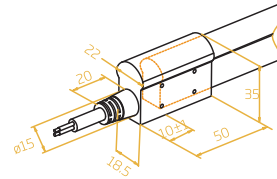


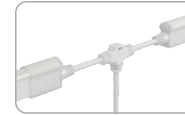
Dual Injection-moulded Front Connector-End



FXN - 1129 - C - DIM - FE

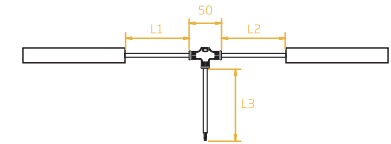


Dual Silicone Injection-moulded Middle Connector & Power T-Feed



FXN - 1129 - C - S - DIM - TF

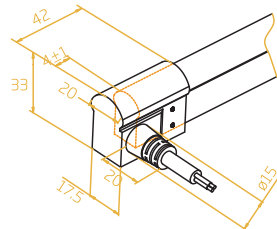
L1 and L2 available in 300mm.
L3 available in 300mm/1000mm/3000mm.



Dual Injection-moulded Front Connector-Side

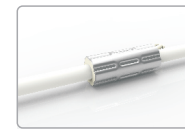


FXN - 1129 - C - DIM - FS



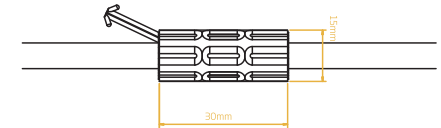
- Note:
1. Unless otherwise stated, the tolerance of the connector is $\pm 0.5\text{mm}$.
 2. To avoid damage from excessive force on cable joint, please keep at least 60mm of cable ahead in the natural state.

Anti-wicking Ferrule



The anti-wicking ferrule is located at 115mm ($\pm 10\text{mm}$ tolerance) from the connector on the cable.
For protection against water ingress from inside of cable wire and hence damage the light.

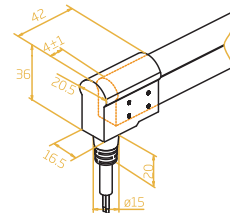
- Note:
1. Unless otherwise stated, the tolerance is $\pm 0.5\text{mm}$.
 2. The removal of anti-wicking ferrule will void the warranty if any water ingress caused by it.



Dual Injection-moulded Front Connector-Bottom



FXN - 1129 - C - DIM - FB



Dual Injection-moulded End Cap



FXN - 1129 - C - DIM - EC

